

NEOimage Quick start (Fluor i In Vivo)

1. Click the **NEOimage** to activate program. (Desktop or start menu)



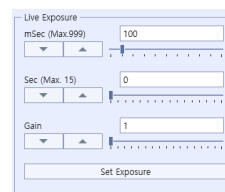
2. Click on the **LIVE** will pop up the live window.



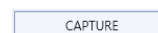
3. Turn on the **White light**.

4. Adjust focus watching the Live window.

5. **Adjust brightness** using adjust time of Live Exposure.



6. Click the **CAPTURE** and Take Bright Image.



7. Assemble the **Emission Filter** to the lens (In the middle of the ceiling inside the chamber) using the magnet power.



8. Can watch the target signal through Live window after turning on the **Excitation Light**.

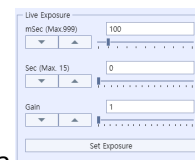
(Filter and Ex Light must be matched)



9. Click on the **LIVE** will pop up the live window.



10. Adjust brightness using Live **Exposure** and **Gain**.



11. Click the **CAPTURE** to take signal picture (If necessary, press the **VIDEO** to get a video file).



12. Click the **Analysis** for removes the background of signal.



13. Select the signal area using the icons on the Edit Tool Bar (Rectangle, Elipse, Polygon and MagicWand). Click the **MeasureTable** to see the results of the measurement

(Background must be removed for the accurate quantitation).



14. If necessary, **Merge** the general images and signal images.

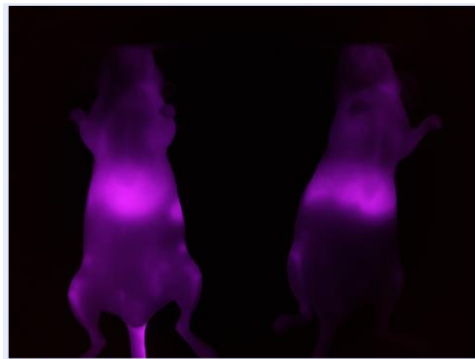


* We can simply copy the image using the image export function or **control+C** or **control+V**. In this case, the figures of the original data are not saved.



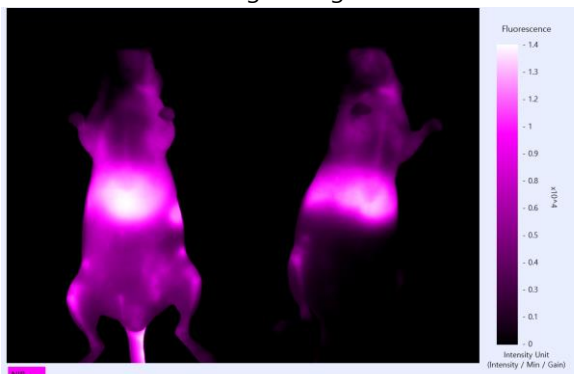
Bright

Bright image

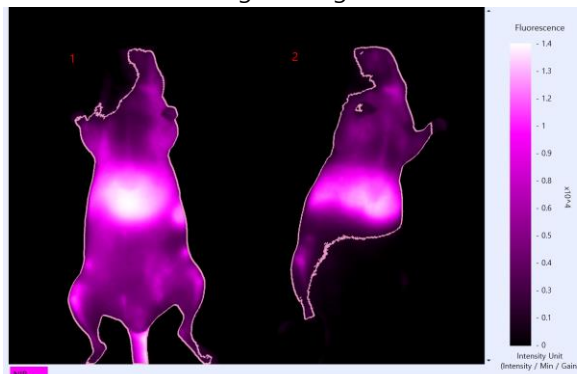


Signal

Signal Image



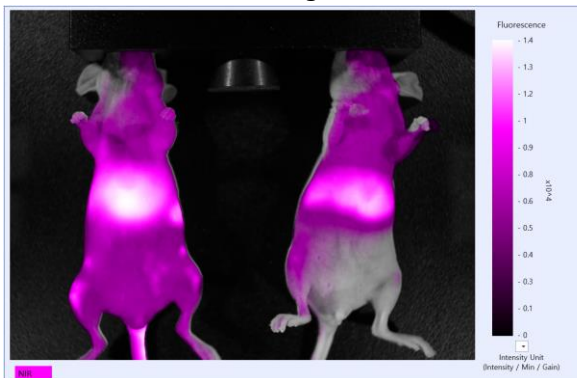
Analysis (subtract background)



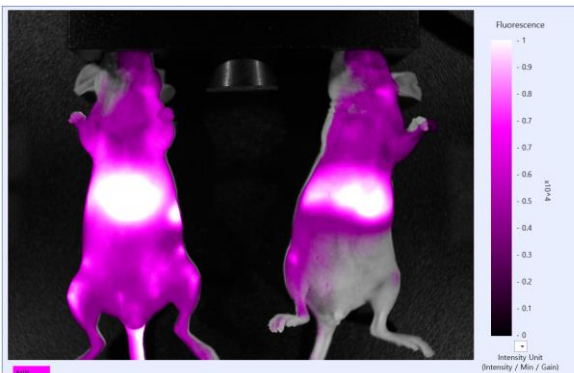
Set ROI (MagicWand)

ROI #	Area (Pixel number)	IU (Intensity/Min/Gain)	Integrated Density (Area...)
1	215489	5071	1092744719
2	135863	3943	535707809

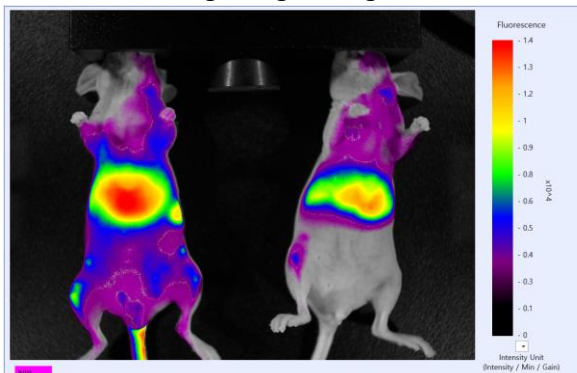
Quantitative Table



Merge (Bright + Signal)



Change the Scale Range (Click the digit)



Change the Signal Color (Click the Color Bar)